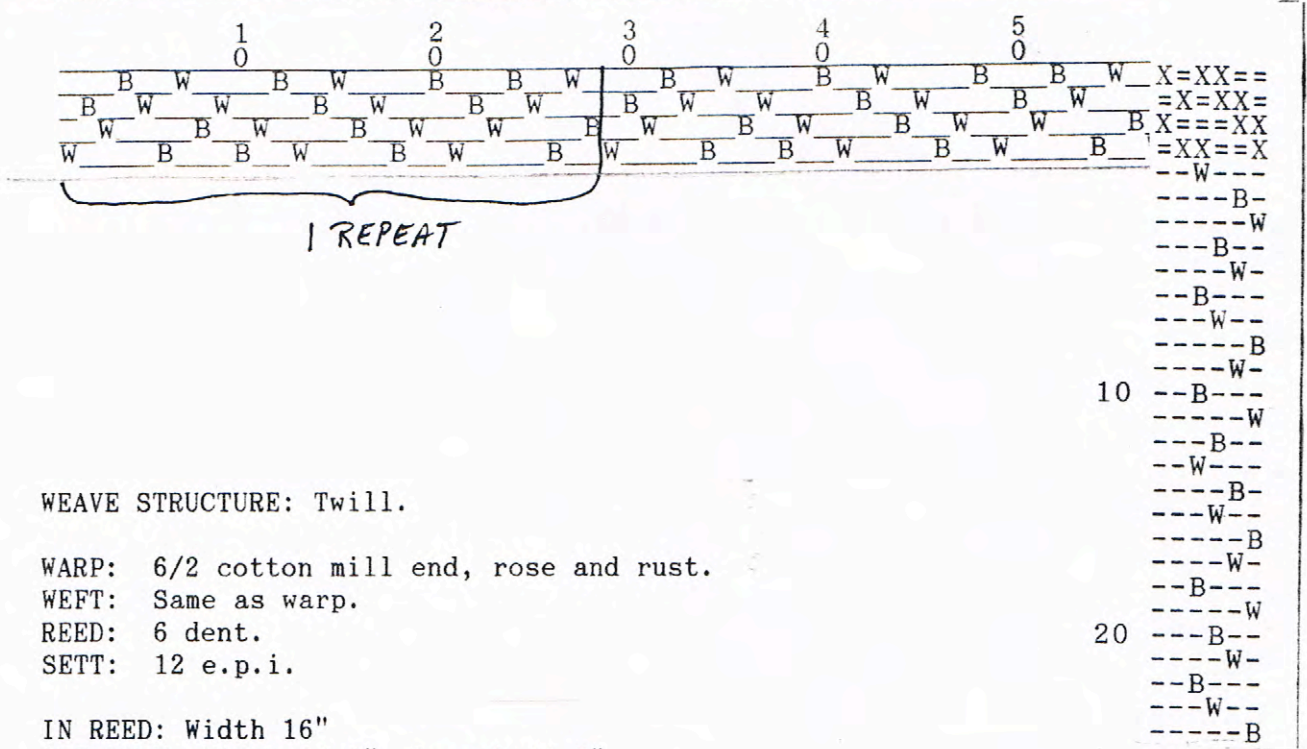


WILLIAMSBURG SPINNERS  
& WEAVERS GUILD

WILLIAMSBURG SPINNERS AND WEAVERS GUILD

SAMPLE: SHADOW WEAVE



WEAVE STRUCTURE: Twill.

WARP: 6/2 cotton mill end, rose and rust.

WEFT: Same as warp.

REED: 6 dent.

SETT: 12 e.p.i.

IN REED: Width 16"

OFF LOOM: Width 14.5" Length 41.5"

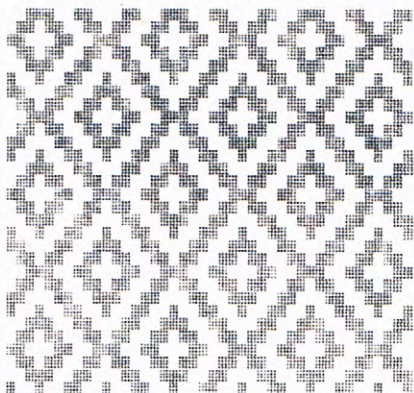
AFTER WASHING: Width 13.0" Length 38.0"

WASHING INSTRUCTIONS: Handwashed in hot water with Ivory dish detergent.

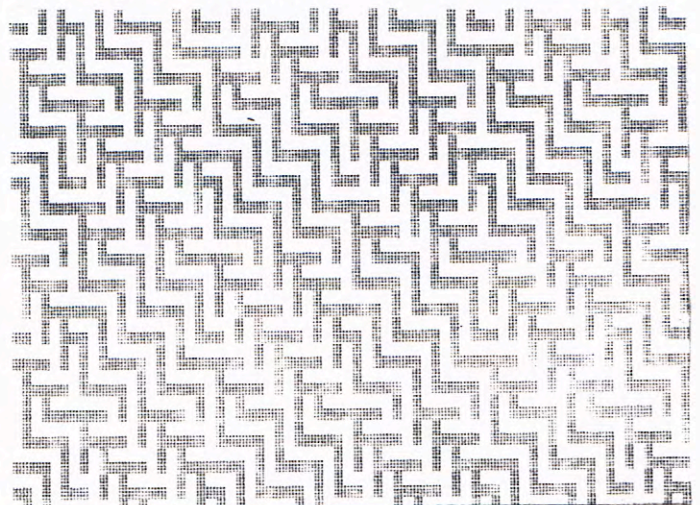
SOURCES: Marguerite P. Davison, A Handweaver's Pattern Book, p.20, "Bird's Eye" (Maria Collin's No. 44). Workshop notes on "Exploring the Shadow Weave", given by Dini Moes. "Shadow Weave: Twills With a Twist" by Dini Moes, Shuttle, Spindle & DyePot, Issue 85, Winter 1990/91, pp 60-62.

NOTES: In the threading "W" represents the twill (rose colored) thread, "B" represents the shadow (rust colored) thread. The same is true for the treading. On the loom the pattern in the cloth was hard to see. Washing really helped bring it out.

"A" is a drawdown of the draft as it appeared in Davidson without the shadow threads. "B" is the drawdown with the shadow threads.



A.



B.